

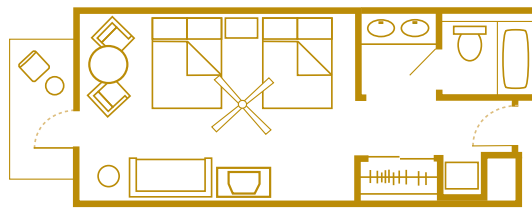
Disney's BoardWalk Inn & Villas

This Disney Deluxe Resort and Disney Deluxe Villa Resort is built around an entertainment complex reminiscent of turn-of-the-century Atlantic City. This "seaside" inn features shingled roofs, private courtyards and New England-style gardens.

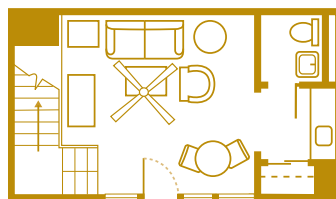


Room Accommodations

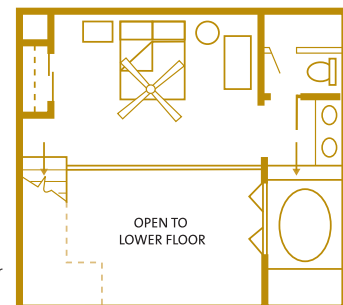
- 352 rooms, 20 suites, 532 villas
- Standard rooms accommodate up to five Guests, plus one child under age 3 in a crib.
- All rooms have two queen-size beds, or one king-size bed and a day bed. Some rooms offer a private balcony.
- Guests choosing **Club Level** accommodations at the *InnKeepers Club* receive personalized concierge service and lounge with continental breakfast, midday snacks and evening wine, hors d'oeuvres, cordials and desserts.



Typical Standard Room with 2 queen-size beds and 1 day bed, 434 sq. ft. Accommodates up to five Guests plus one child under age 3 in a crib.



First Floor



Second Floor

Typical 1-Bedroom Garden Cottage with 1 king-size bed and 1 queen sleeper sofa, 915-1,100 sq. ft. Accommodates up to two Guests plus one child under age 3 in a crib.

DISNEY'S BOARDWALK INN & VILLAS



Standard Room



1-Bedroom Garden Suite



2-Bedroom Suite

Dining (Nearby at Disney's BoardWalk Entertainment District)

Signature Dining

- *Flying Fish* – Dinner specialties redefining American cooking through simplicity, true tastes and seasonal freshness, the Flying Fish chefs create signature dinner specialties such as potato-wrapped snapper and oak-grilled steaks.

Table-Service Dining

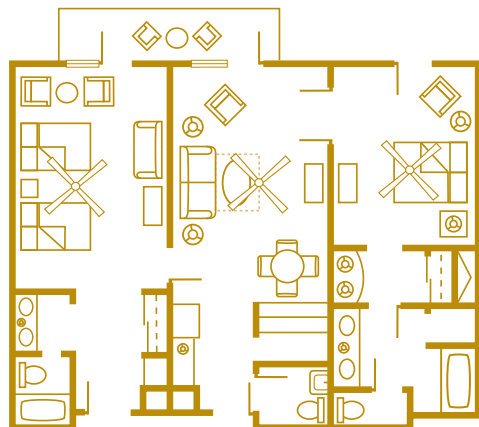
- *Big River Grille & Brewing Works* – Lunch and dinner featuring appetizers, sandwiches, steaks, seafood, chicken and fresh-brewed specialty ales.
- *ESPN Club* – Lunch and dinner featuring appetizers and sandwiches. Watch live sports broadcasts
- *Trattoria al Forno* – Breakfast featuring frittatas and dinner featuring wood-fired pizzas, hand-rolled pastas, velvety risottos and seasonal seafood

Quick-Service Dining

- *BoardWalk Bakery* – Baked goods, soups, salads and sandwiches
- *Ample Hills Creamery* – Ice cream, homespun milkshakes and sundaes

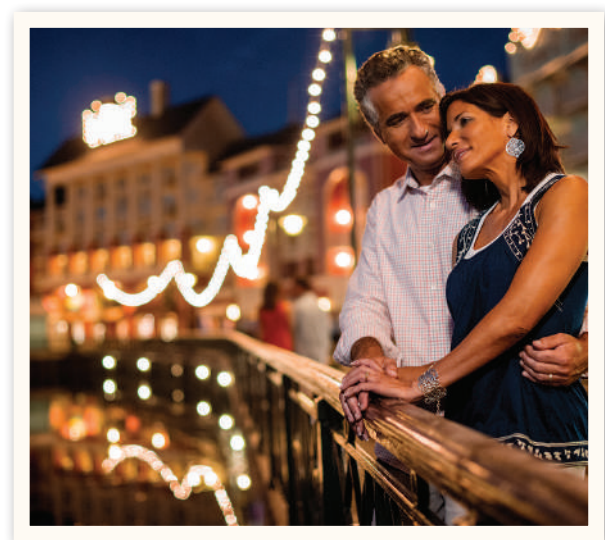
Other Dining Options

- Lounge serving morning coffee and pastries and bar specialties in the evening, poolside snack bar and room service



Typical 2-Bedroom Suite with 1 king-size bed, 2 queen-size beds and 1 queen sleeper sofa, 1,288 sq. ft.

Accommodates up to eight Guests plus one child under age 3 in a crib.





Recreation

- Heated pool with 200-foot themed waterslide, two leisure pools, children's pool
- Playground, whirlpools, health club, tennis, fishing, new balance® RUNNING TRAIL
- Community Hall family recreation room, arcade and recreation activities including Disney Movies Under the Stars

Transportation

- Within walking distance of Epcot® and Disney's Hollywood Studios®.
- Water launch service to Epcot®, Disney's Hollywood Studios® and other select Disney Resort hotels
- Bus service to other Walt Disney World® Resort locations



Disney's BoardWalk Villas

Villa Accommodations

Two-Bedroom Villas accommodate up to eight Guests, plus one child under age 3 in a crib, and offer a fully equipped kitchen, master bedroom, second bedroom, two full bathrooms, washer and dryer, DVD player and private porch or balcony.

One-Bedroom Villas accommodate up to four Guests, plus one child under age 3 in a crib, and offer a fully equipped kitchen, king-size bed in master bedroom and queen-size sleeper sofa in living room, washer and dryer and private porch or balcony.

Deluxe Studios accommodate up to five Guests, plus one child under age 3 in a crib, and have a kitchenette, one queen-size bed, double-size sleeper sofa, bunk-size pull-down and private porch or balcony.

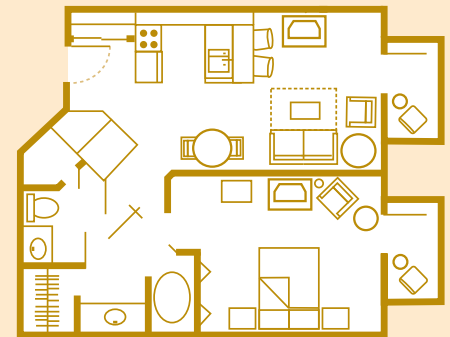
A limited number of 3-Bedroom Grand Villas accommodating up to 12 Guests may be available upon request.



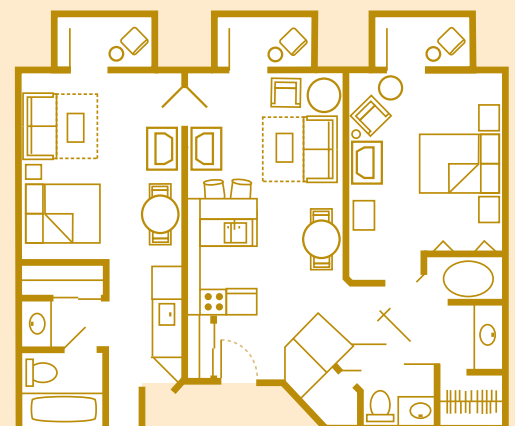
2-Bedroom Villa



Typical Deluxe Studio, 412 sq. ft. Accommodates up to five Guests plus one child under age 3 in a crib.



Typical 1-Bedroom Villa, 814 sq. ft. Accommodates up to four Guests plus one child under age 3 in a crib.



Typical 2-Bedroom Villa, 1,226 sq. ft. Accommodates up to eight Guests plus one child under age 3 in a crib.